

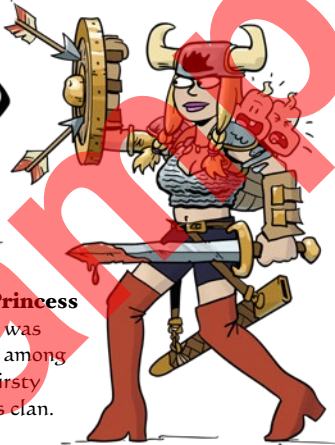
WELCOME TO SPIREKASSLE...

On the mighty River Vulga, at the edge of the great abyss. Crossroads of the world in an age of wonder! A thousand races mingle in its streets. Strange creatures slither through its sewers. It is a city of magic. A place that a mighty sorcerer would be proud to call home... And in the absence of a mighty sorcerer, there's **PEWPELL PORFINGLES!**



Pewfell

A mostly useless wizard who failed to graduate from sorcery school.



Tina The Warrior Princess

Pewfell's beloved wife was raised to hold her own among the rough and bloodthirsty warriors of her father's clan.



Gnom Jean Gnome

A small, blue pest who lives in a hole under the stairs.



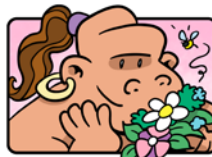
Bish Bathenwell

Devoted cleric of the goddess Hornbag, an obscure deity that no-one have ever heard of.



Kolin Kook

Bish's loyal but largely vacant acolyte.



Fug The Barbarian

Fug is a gentle soul, but even the loss of a single Hit Point can throw him into an uncontrollable fit of berserker rage.



Pedwyn T. Jackal

Pedwyn is a free spirit who loves life and loathes only boredom. He generally finds that crime is the most efficient way to earn a living.



Lillypad

Pewfell's old college roommate was partially turned into a toad during his magical resistivity finals. Now a restaurant critic for the Spirekassle Gazette.



Bogbrian

Landlord of Pewfell's local, "The Hog's Nuts Sports Bar and Grille".

ANOTHER DAY DAWNS IN THE ANCIENT AND ANARCHIC CITY OF SPIREKASSLE, WHERE WE HEAR THE DULCET TONES OF TINA THE WARRIOR PRINCESS CALLING OUT TO HER HUSBAND, THAT SHAGGY SORCERER OF LITTLE NOTE,

REWFELL!

...HAVE YOU SEEN MY CHAINMAIL PANTIES ANYWHERE?!



