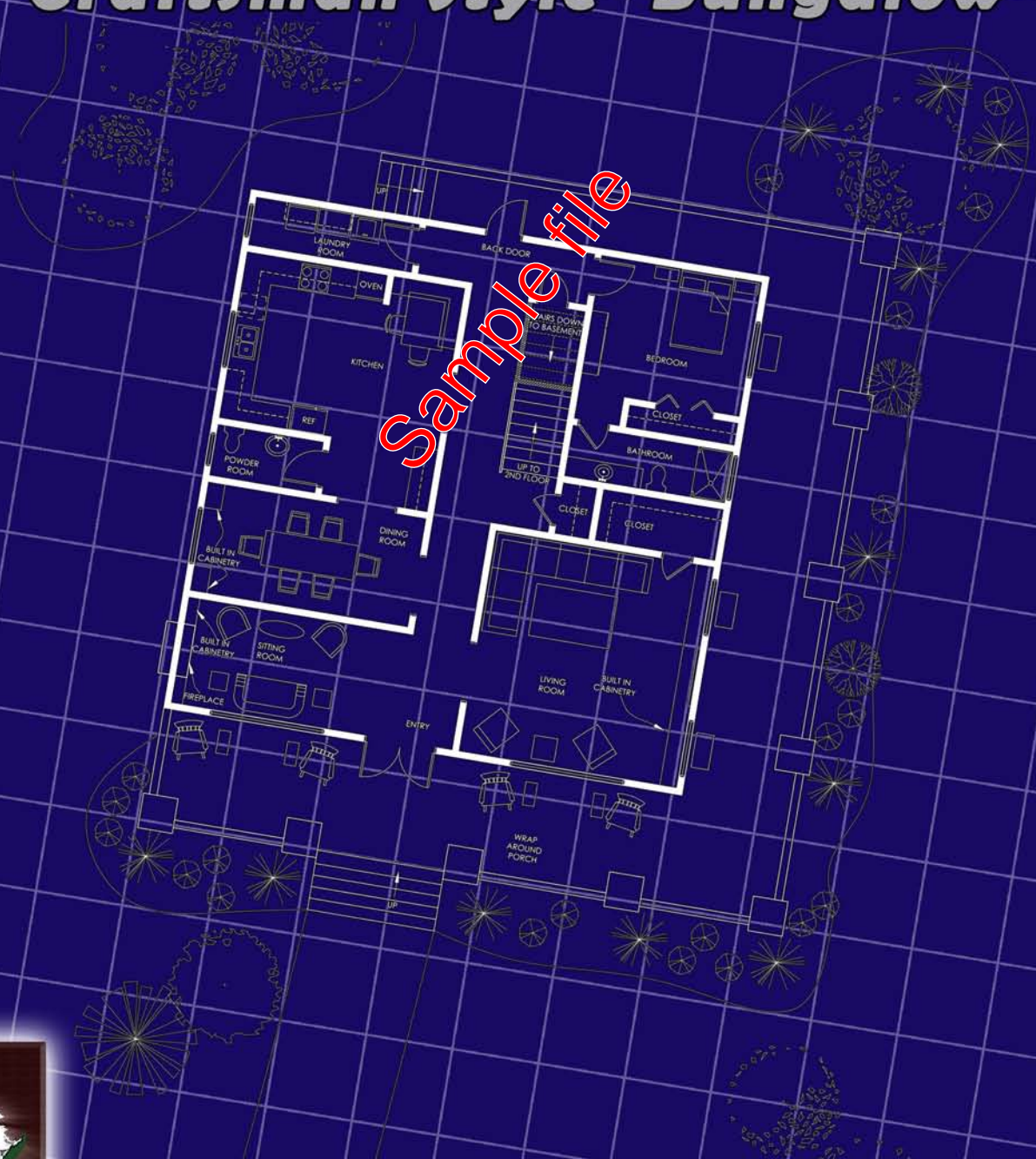


Modern Floorplans

At Home Series

“An Average Modern ‘Craftsman Style’ Bungalow”



Sample file



MODERN FLOORPLANS VOLUME 4: AT HOME

“AN AVERAGE MODERN 'CRAFTSMAN STYLE' BUNGALOW”

BY CHARLES AND KRISTA WHITE

Drawn by: Krista White
Conceptualized by: Charles White
Cover art concept by:
Preston DuBose
Immeasurable assistance by:
Clint Black and Stu Miller

Plus, a very special thank you to our publisher,
12 to Midnight . . . especially Preston DuBose and
Jerry Bukemore.

Modern Floorplans Volume 4: At Home ©2009, Fabled Environments.
All rights reserved. Fabled Environments and the Fabled Environments logo are
trademarks of Fabled Environments. 12 to Midnight and the 12 to Midnight logo are
trademarks of 12 to Midnight.

This material is protected under the copyright laws of the United States of America.
Notice to copy shop owners - holders of this document are licensed to print, at any size,
up to two copies at a time of the floor plans contained herein for personal use. Any other
reproduction or unauthorized use of the material or artwork contained herein is prohib-
ited without the express written permission of Fabled Environments and 12 to Midnight.

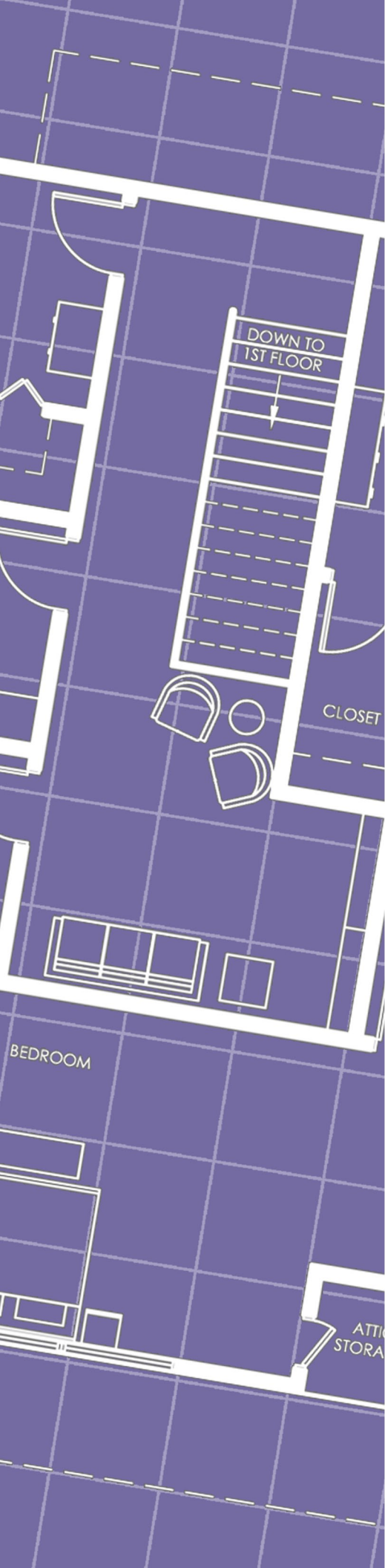
This product is a work of fiction. Any similarity to actual structures is purely
coincidental. Although these floor plans have been created with a great deal of quality,
they are not intended to be used to create actual structures. Made in the USA.



TABLE OF CONTENTS

| | |
|--|----|
| AUTHOR'S NOTES..... | 4 |
| ABOUT THE AUTHORS..... | 5 |
| INTRODUCTION..... | 6 |
| HOW TO USE OUR MAPS..... | 7 |
| VALGE HOUSE - AN AVERAGE MODERN 'CRAFTSMAN STYLE' BUNGALOW | |
| BASEMENT | |
| 24 X 36 OVERVIEW..... | 8 |
| 8 1/2 X 11 OVERVIEW..... | 9 |
| TILE KEY..... | 10 |
| COMPLETE MAP..... | 11 |
| NO LABELS..... | 15 |
| NO GRID..... | 21 |
| NO FURNITURE/NO LABELS..... | 27 |
| GROUND FLOOR | |
| 24 X 36 OVERVIEW..... | 33 |
| 8 1/2 X 11 OVERVIEW..... | 34 |
| TILE KEY..... | 35 |
| COMPLETE MAP..... | 36 |
| NO LABELS..... | 40 |
| NO GRID..... | 46 |
| NO FURNITURE/NO LABELS..... | 52 |
| SECOND FLOOR | |
| 24 X 36 OVERVIEW..... | 58 |
| 8 1/2 X 11 OVERVIEW..... | 59 |
| TILE KEY..... | 60 |
| COMPLETE MAP..... | 61 |
| NO LABELS..... | 65 |
| NO GRID..... | 71 |
| NO FURNITURE/NO LABELS..... | 77 |

Sample file



AUTHOR'S NOTES

For years, I have enjoyed playing in and running modern and near-future campaigns. The frustrating thing about gaming within these settings is the lack of maps. I began collecting maps of places that I visited for use in my games, such as hospitals, museums and other places. One of my favorites was a map of a museum that I found online. However, none of them completely fit the bill. I went to various gaming websites and stores looking for good maps, but couldn't find any that interested me. I quickly got tired of planning my games around the maps that I had available. I knew that I needed to do something, but didn't know what.

About seven years ago, Krista began drafting in AutoCAD and creating some amazing structures for school projects and then for work. It wasn't until about two years ago that it dawned on me that these structures were exactly what I needed for my games. Although not a gamer herself, Krista used her expertise to create incredible modern structures for me based on the input that I offered. I then figured that if I am in need of maps of modern structures, there must be many other people that need maps as well.

I initially thought that gaming companies would be falling all over themselves to get their hands on these maps. Boy was I wrong. There were several things that I hadn't thought of if the maps were going to be produced and sold in gaming stores.

Most gamers wanted a map that they could throw on a table and use with their miniatures. They didn't want to draw out the maps; and given the detail of the maps it would be difficult for those that wanted to try. In addition, the maps needed to be printed on 24"x36" paper to be at the correct scale and this was very expensive. If we wanted to sell the maps, the cost would be prohibitive.

The maps sat on the shelf for quite some time until Krista and I decided to contact a few game companies to see if they needed someone to create maps of modern structures for their products. There were no takers. About the same time, one of our good friends, Clint Black, was working with a couple of gaming companies on various projects. We sent him some of the maps that Krista had created. He suggested that we talk with an indie gaming company that was heavily utilizing modern settings. That company was 12 to Midnight.

We sent a couple of samples to the folks at 12 to Midnight and they loved them. At the same time, they solved our biggest obstacle. If we released the maps in .PDF format, we didn't have to worry about the constraints of printing. And, the rest is history. It just goes to show that if you have a dream and the support of great friends and family, you can accomplish anything!

- Charles White



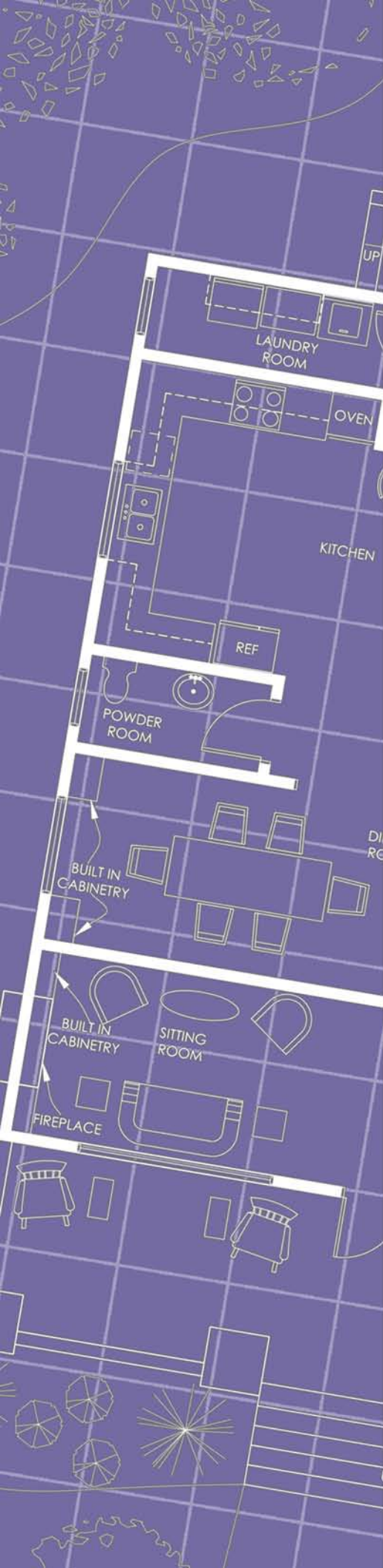
ABOUT THE AUTHORS

Charles White has been involved with gaming ever since a high school friend brought a copy of the expert set of Dungeons and Dragons to school one day. Twenty years later, Charles still games on a regular basis and runs games on occasion. Definitely not the typical gamer, Charles is a Lutheran Seminary graduate and holds two Masters degrees; one with a focus in American Church History and the other, an advanced Masters, in the area of American Religion and Culture.

Krista White is not your typical creator of gaming supplements. In fact, she has never gamed in her life. However, one fateful day, over ten years ago, she met a bright-eyed handsome gamer and her life has never been the same since. Krista is an experienced architectural drafter who works on many real world projects during her “day job”. In addition, she has a degree in interior design and is a painter, sculptor, scrapbooker and all around artiste.

Krista and Charles both call North Carolina home where they live with their “daughter”, Daisy, a full-blooded Golden Retriever and recently added “son”, George, a rambunctious hound n.g.

Sample file



INTRODUCTION

Modern Floor Plans

Volume 4: At Home

“An Average Modern ‘Craftsman Style’ Bungalow”

Welcome to Modern Floor Plans: At Home. We hope that you enjoy these floor plans and encourage you to keep an eye out for more releases from Fabled Environments.

The Valge House: a guided tour

Welcome to the Valge House. I am Charles and I will be your tour guide. First let me begin with a bit of history. Henri Valge, for whom this house was named, came to this area in the early 1900's with his lovely bride, Penelope. The son of French immigrants, Henri made a promise to his parents that he would be a huge success one day.

True to his word, Henri worked hard and made his fortune in the shipping industry. Although not as famous as the Biltmores or Rockefellers, Mr. Valge did amass a sizable fortune and an international empire that still bears his name. In 1919, Mr. Valge had begun his meteoric rise in the shipping industry and wanted to do something special for his mother and father. He began by building them this home.

He commissioned Hugo Bruno, a California architect, to create a home in the Craftsman style, similar to the ones that he fell in love with on a trip to San Diego a few years earlier. The home took one year to build and boasts some amazing architectural features. Many believe this home to be one of the best examples of a Craftsman Style Bungalow outside of California.

As you can see from the exterior, the home is a classic example of Craftsman architecture. The front porch columns with the stone base and wooden extensions as well as a porch that lies beneath the main roof are just a few of the common elements in this style of construction.

As we walk through the entry, you can see the home's sitting room. This room highlights another important feature of the Craftsman home, which is the presence of built in furniture pieces. In this case, the room holds built in cabinetry that frames the gorgeous stone fireplace. To the right is the home's living room. Notice, once again, the built in cabinetry that lines the far wall.

Moving away from this room toward the rear of the home, we also see the formal dining room on the left. It is important to point out that all of the cabinetry in the home was crafted by the famous British cabinet maker, Branford West, who himself had a great impact on the Arts and Crafts period in American history.

At the rear of the home is an additional entry. This is also the location of the kitchen, the first of the home's four bedrooms and stairs leading up to the second floor and down to the basement. The kitchen, although retaining many of the details of the period in the form of moldings, woodwork and stained glass, was modernized before being donated to the Valge foundation as a museum. Now a quick word about the basement. Apparently, Mr. Valge had grand plans for this space that never materialized. Therefore, the basement is unfinished with the exception of a utility closet that houses the home's two water heaters and other essentials.

Upstairs we find three more bedrooms, including the master bedroom. This is an actual master suite, which is a bit unusual for the period. The other two bedrooms share the second of the home's bathrooms. Throughout each of these bedrooms are even more examples of incredible Craftsman style architecture and design. Notice the details and style of the end tables and bed frame in the master suite that are evocative of the style of Frank Lloyd Wright and have come to epitomize the period. These pieces are also courtesy of Mr. West and are original to the home. Note also the two wonderful Morris chairs. These chairs are great examples of early recliners. It is said that once you sit down, you never want to get back up again.

I hope that you have enjoyed your tour of this historic home. Feel free to wander around the outside of the home and take in the full effect of the wonderful craftsmanship that went into building this exquisite home. Please visit us again soon.



HOW TO USE OUR MAPS

Each map in the Modern Floorplans collection is available for printing in three options:

- An 8.5×11 single-page overview map. On these maps, 1 square does not equal 1 inch, however each square does represent 5 feet. This map is useful for the GM who just needs an overview or who plans on drawing out the floor plan on a dry-erase grid.
- A 24×36 or 36×48 map. These are "standard" miniature-ready maps, in which 1 square equals 1 inch, and each square represents 5 feet. These maps are ideal for throwing on the table and instantly playing, but not many people have large-format printers in their homes. These maps can usually be printed at a copy shop relatively inexpensively, and the copyright notice on page 2 includes a note to copy shop owners explicitly allowing you to print our maps for your personal use.
- A series of 8.5×11 pages that, when laid out side by side, form the same size map (at the same scale) as the one above. This tiled version can be printed from your home printer, but requires some invisible tape and scissors to put together. See "How to Tile" below.

In putting together this map pack, we tried to keep GM flexibility in the forefront. Not only do you have three different ways to use the map on your gaming table, but also we have provided you with three different iterations of each floor plan. We have rendered each map...

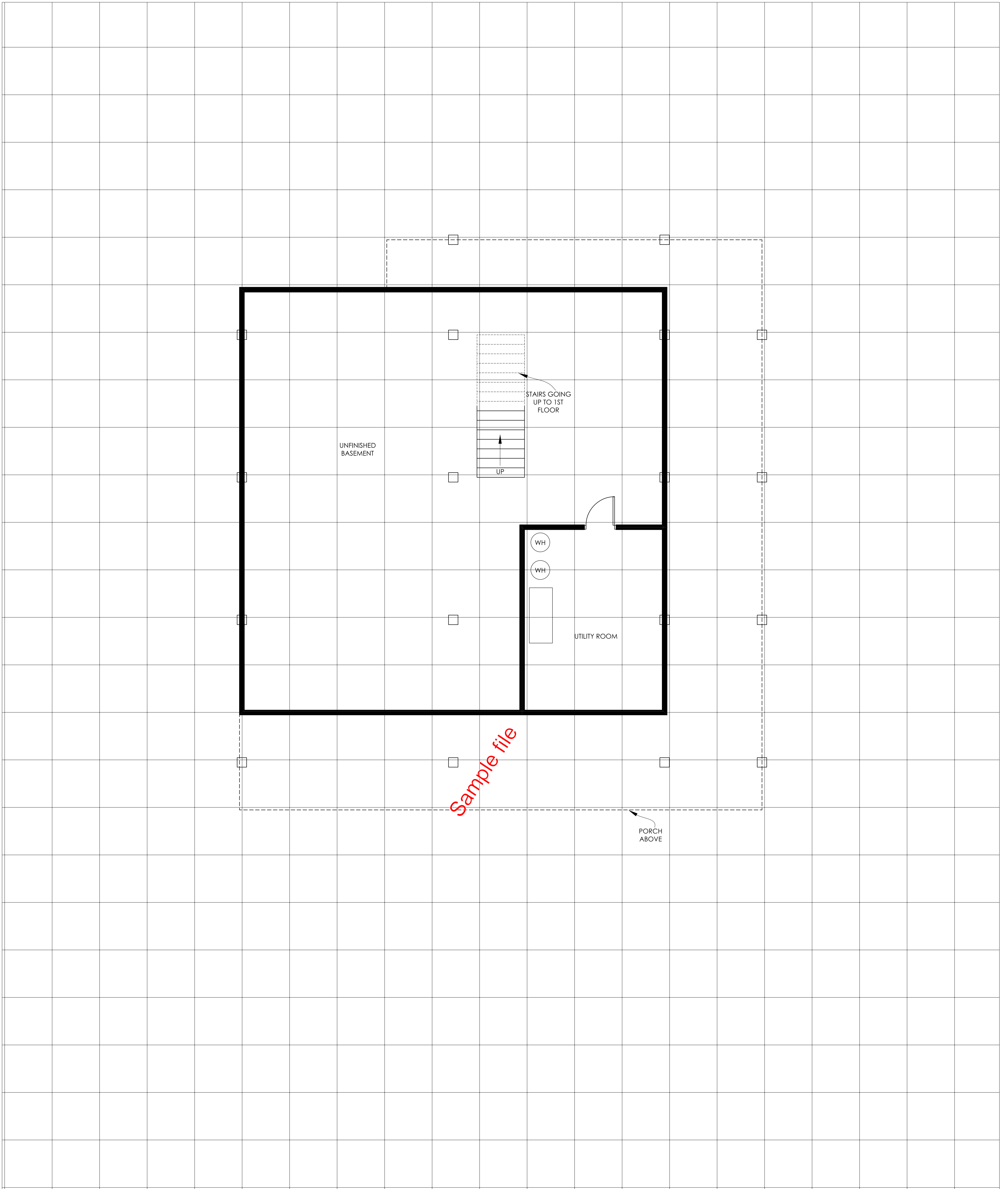
- with furniture, room labels, and gridlines
- with furniture and gridlines
- with gridlines only

Because each floor plan comes in different sizes AND with different features enabled, the table of contents and PDF Bookmarks are crucial for finding and printing only the floor plans you need. We have tried to be as clear as possible in labeling and navigation, but please let us know if you have ideas for improvement.

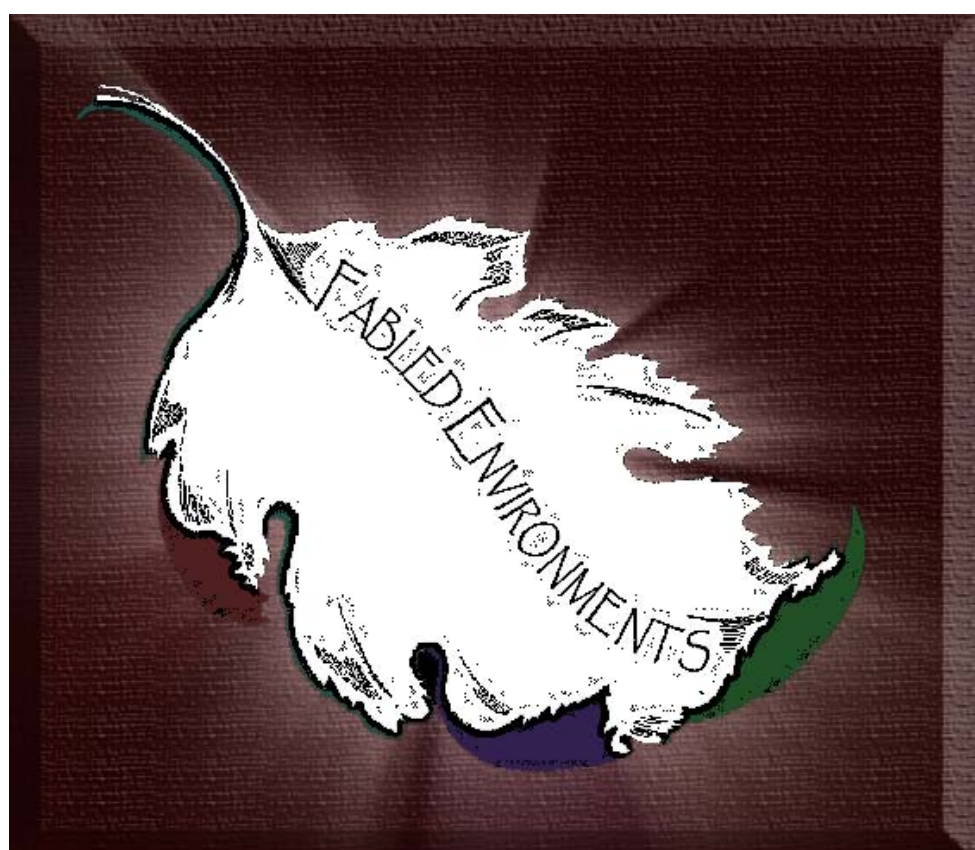
Thank you for your purchase. We welcome your feedback regarding future map ideas, constructive criticism or anything else you might like to share with us. If you have enjoyed this map set, we have many other maps available that you might also like. You can find information on all our current and future releases at www.12tomidnight.com. Please feel free to join in the discussion on our forum at 12 to Midnight.com - <http://12tomidnight.com/forum> - or send us an email at fabledenvironments@gmail.com.

HOW TO TILE

First, you simply print out the tile pages on your standard printer on 8.5×11 paper. Then, using the tile key we have provided you (if necessary), match up the tiles using the annotations on the upper left of each tile. For example, A1 matches up to A2, which matches up to A3. B1 matches up to B2, which matches up to B3. Put all the rows together and you have your full scale 1" = 5' map.



SCALE: 1" = 5' - 0"

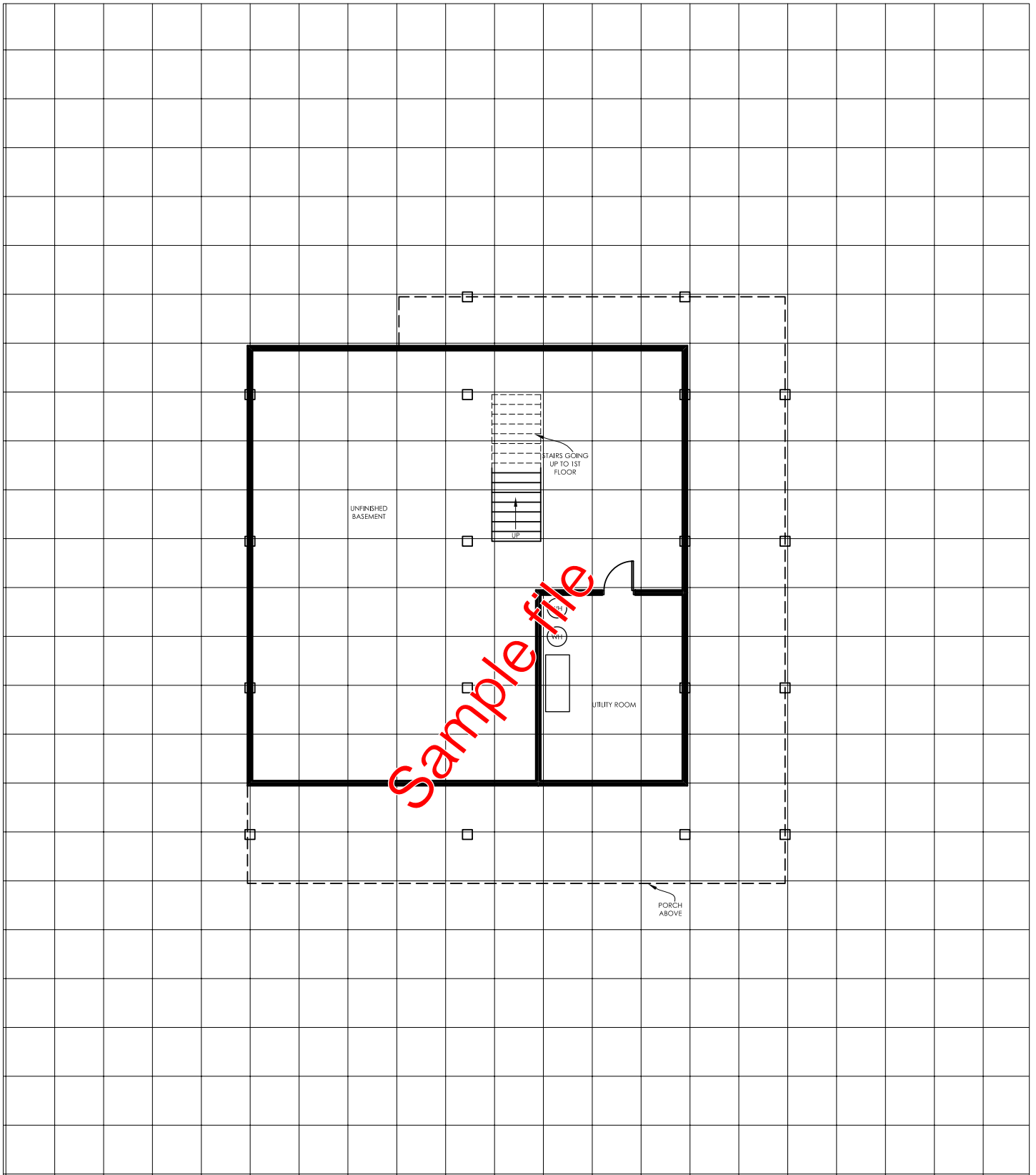


"At Home" map pack
 "Valge House" - Basement
An Average Modern Craftsman Style Bungalow
 Approximately 2,025 sq. ft.
 © 2009 Fabled Environments
 all rights reserved

distributed by



12 to Midnight



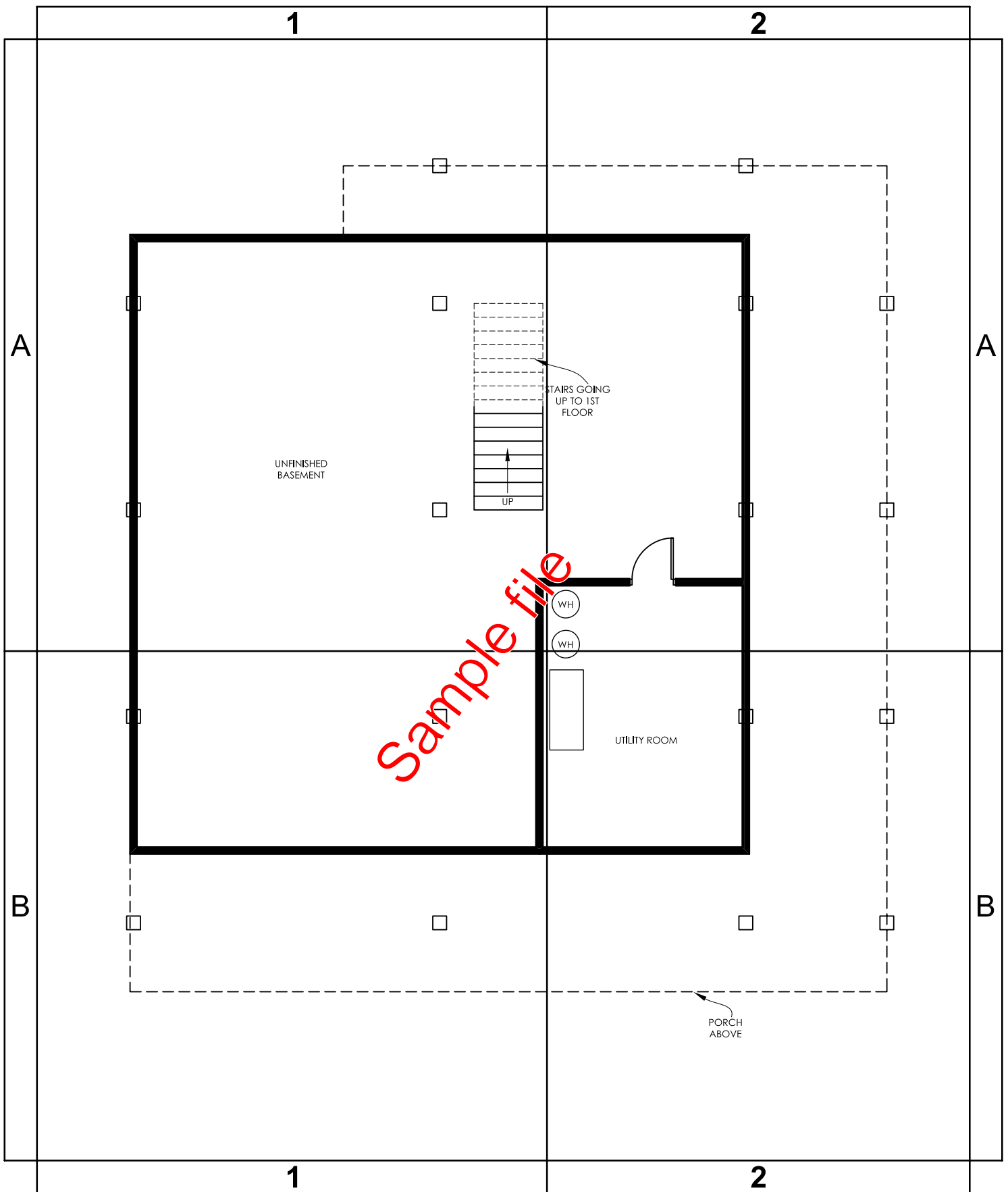
"At Home" map pack
"Valge House" - Basement
An Average Modern Craftsman Style Bungalow Approximately 2,025 sq. ft.

© 2009 Fabled Environments all rights reserved

distributed by



12 to Midnight



"At Home" map pack
 "Valge House" - Basement
 An Average Craftsman Style Bungalow Approximately 2,025 sq. ft.

© 2009 Fabled Environments all rights reserved

distributed by



12 to Midnight

